

# Ross Intermediate

COULD BE YOUR SCHOOL IN 2021



That is  
**Awesome!**

## FROM THE PRINCIPAL...

I am extremely proud to be the Principal of Ross Intermediate. Our school has grown from strength to strength. This has been due to the incredibly supportive community that we have. We are also fortunate to have a strong and professional staff working extremely hard to ensure that our students have the best learning opportunities available.

We are a progressive school that is always looking for new ways to enhance student learning. Technology and the role of technology in education is a big focus for Ross Intermediate. We want all students to reach their potential and become active and enthusiastic contributors.

Our school vision reflects what we believe as a school and what we want for all our students. We are also governed by an Enrolment Scheme and full details of this are available on our website under enrolment. A summary is included in this guide.

Education has changed so much in the past 20 years since we were all at school. Not only are there obvious changes in environment and technology but also in what we know about how students learn and the best ways to make a difference for all learners. Fundamentally though, our role has not changed and we are proud of what we do for our students as we prepare them for the fast paced modern world we live in.

Our success is in the partnership we have with you, the parents. We want to work with you for the two years your child is with us and hope you feel welcome to call in and discuss their learning and issues that may arise. The more we know, the better we can do our job.

We look forward to providing your child with the skills, attitudes and knowledge that they require for the world they are living in.

Further information is available through our website:

[www.rossint.school.nz](http://www.rossint.school.nz).

Regards

Wayne Jenkins  
**PRINCIPAL**



## 2021 - 2022 TERM DATES...

Ross Intermediate will be open for instruction on the following dates. Parents needing to take students out of school for extended periods need to contact the school and seek approval. We have always been supportive of overseas travel and family opportunities.

	2021	2022
<b>Term One</b>	Tuesday 2 February - Friday 16 April	Tuesday 1 February - Thursday 14 April
<b>Term Two</b>	Monday 3 May - Friday 9 July	Monday 2 May - Friday 8 July
<b>Term Three</b>	Monday 26 July - Friday 1 October	Monday 25 July - Friday 30 September
<b>Term Four</b>	Monday 18 October - Thursday 16 December	Monday 17 October - Friday 16 December
<b>Staff Only Days</b>	Friday 2 April (Contract Entitlement) Friday 4 June (Queens Birthday Weekend) Friday 25 June (Contract Entitlement) Friday 17 September (Contract Entitlement) Friday 22 October (Labour Weekend)	Friday 25 March (Contract Entitlement) Friday 3 June (Queens Birthday Weekend) Friday 24 June (Contract Entitlement) Friday 16 September (Contract Entitlement) Friday 21 October (Labour Weekend)





# STUDENT DEVICES @ ROSS

Students require a device to support learning at Ross Intermediate. Upon enrolment you will be asked if you can provide a device or if you require one from us. The options are Chromebook or MacBooks.



## SCHOOL ORGANISATION

Students remain with a homeroom teacher for the majority of their day. They are placed in a team and will work with other teachers from that team for some curriculum areas including Specialisation.

### TEAM STRUCTURE 2021

The school is divided into five hubs. These are named after inspirational New Zealanders. The houses are:

Ngata House - Sir Apirana Ngata

Cooper House - Dame Whina Cooper

Hillary House - Sir Edmund Hillary

Sheppard House - Kate Sheppard

Batten House - Jean Batten

### SPECIALIST PROGRAMMES

In 2021 students will be offered specialist programmes in the following subjects:

- . Science
- . Hard Materials Technology
- . Food Technology
- . Maori Visual Arts
- . Robotics
- . Music and Media

Dance and Drama along with other learning areas based on the strengths of the team.



### REDUCED CLASS SIZE GUARANTEE

We aim to keep our class sizes below 26 students. 2020 is the sixth year of this initiative and teachers, parents and students alike are all finding it much better. Teachers all agree that they have more time to deliver personalised programs to meet individual needs, the environments are more spacious and students get more 1-1 time with the teacher.

BELL TIMES	
8:20	Teachers are in class.
8:40	Start of day homeroom
10:40	MORNING TEA
11:00	End of MORNING TEA
12:30	Start of eating / LUNCH
12:40	Outside for LUNCH
1:15	Start of afternoon Class
2:35	Afternoon homeroom
2:45	End of the day



You will notice this logo on our Sports Uniforms and around the school. It was designed by our very own talented teacher Miss Shiree Anderson. The koru represents the development and growth of our students across intermediate life and the two curves are symbolic of their two years with us.

Please contact us if your child is going to be away from school.  
Phone the answer phone or text



021 157 2739

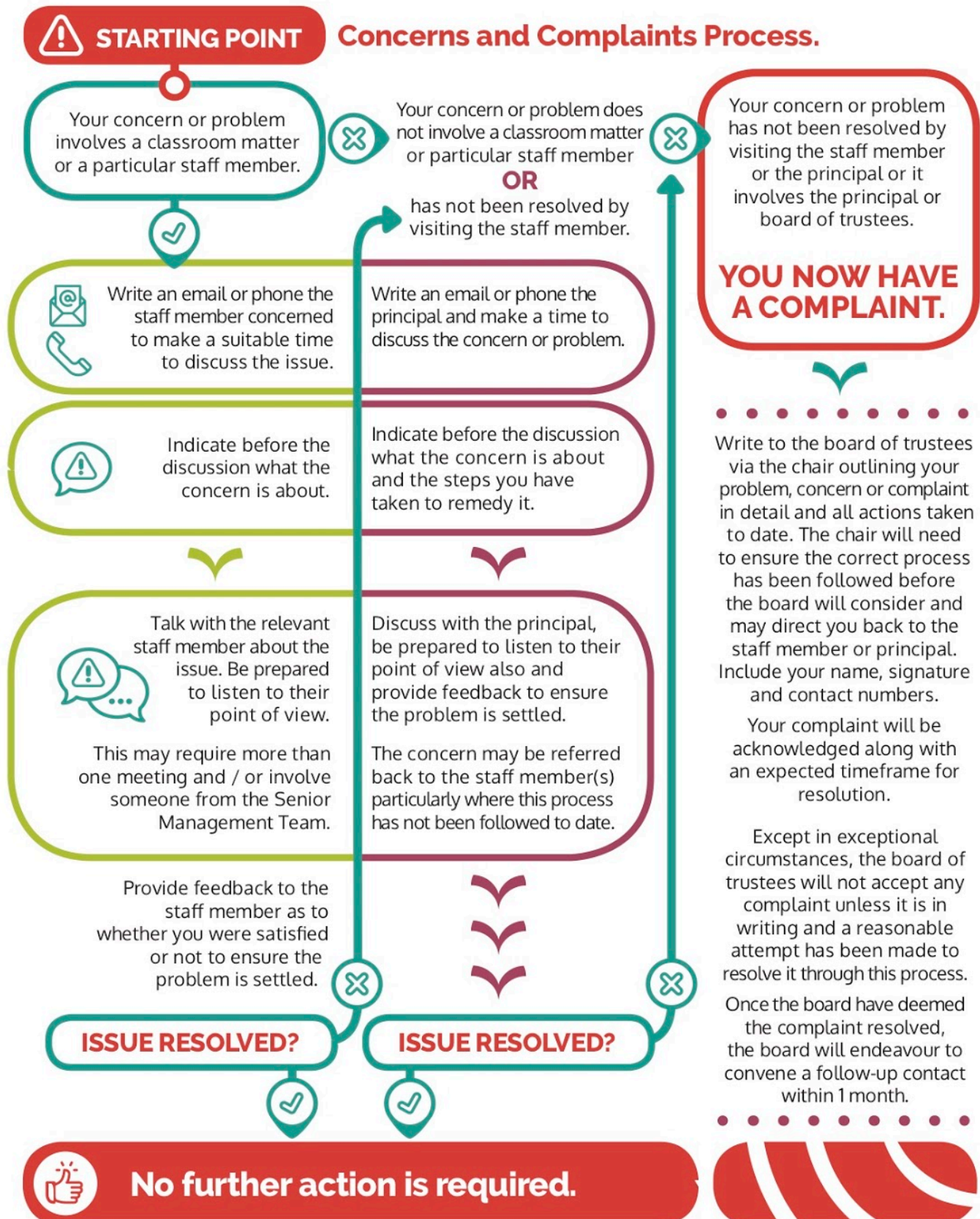
358 5461



# CONCERNS and COMPLAINTS

From time to time we make mistakes and we get things wrong. Sometimes you may not always agree with something we are doing. We like to encourage open communication of issues. The following table helps you to know who to direct your concern to. We do ask at all times that you deal with your concerns in a supportive and collaborative manner.

We are all human and when mistakes are made they need to be corrected and addressed in the appropriate manner.



# ROSS INTERMEDIATE CHARTER

We all agree that at Ross Intermediate we want the best teaching and learning possible for all students.

We will achieve this through the following ways:

Talking and listening to you as well as keeping you informed along the way  
**(Home-School Partnerships)**

Using other people in the community  
**(Community Service Learning)**

Learning with other people  
**(Co-operative Learning)**

Questioning things and exploring the answers  
**(Inquiry Based Approach)**

Using really cool stuff that helps us learn, and look up cat videos  
**(Use of Technology)**

Providing useful feedback to our learners so they can improve  
**(Formative Assessment)**



To help us with all of this we focus on five main goals:

To create meaningful learning programmes to meet individual needs of emerging adolescents.

To develop creativity, innovation and critical thinking in all students, enhanced through eLearning opportunities

To develop citizens who display integrity, value themselves, others and the environment.

To build an effective team providing quality learning opportunities for all students.

To create a learning community involving staff, students and their whanau.



Through everything we do we uphold the following:

**Act** *with*  
**Integrity**  
whakamahia kia tika

**Learn** *with*  
**PURPOSE**  
ako kia kaha

**Inquire**  
*and*  
**Dream**  
whaitia ou moemoeā



**MEMORANDUM OF  
UNDERSTANDING:**  
RANGITANE IWI and  
ROSS INTERMEDIATE

**Key Objective:**

To enable Rangitane O Manawatu Iwi and Ross Intermediate School – Te Kura O Ross to establish a collaborative mutually respectful relationship that further enhances the schools determination to support the education pathways of all learners and their Whanau and the wider Ross Intermediate community.

In signing this Memorandum of Understanding Ross Intermediate acknowledge the following:

- The special status of Maori as Tangata Whenua of Aotearoa New Zealand,
- Te Reo Maori, Maori Language 1987 as an Official Language of Aotearoa New Zealand and
- Te Tiriti O Waitangi the Treaty Of Waitangi 1840 as the founding document of Aotearoa New Zealand as a Nation.

**NEW**

## ROSS INTERMEDIATE LOCAL CURRICULUM DEVELOPMENT

This year Ross Intermediate is engaging in a process to create our local curriculum. This is our schools expression of the aims and aspirations of the New Zealand Curriculum. We are working with Massey to engage staff, parents and the Board around what it is that makes Ross Intermediate a special place.

This year we have focused on looking at the parts of Ross Intermediate that we want to maintain through this process. Our emerging focus on Te Ao Maori, sustainability and our PB4L values of Act with Integrity, Learn with Purpose and Inquiry and Dream are all examples of core parts of our way of life that we want to maintain. On top of this we know that students love learning in a digital environment and value the range of opportunities that they get access to.

In mid Term 3 the focus is going to be on developing a vision to help guide this curriculum. Building on the voice that we have collected from staff and the community over the last 18 months we plan to consult on this vision. It is going to be guided by the idea - what does Ross Intermediate need to look like in 2023. Look out through emails and social media for your opportunity to add your thoughts.





# PB4L



Ross Intermediate is a school embracing the philosophies of PB4L. It is a positive system designed around restorative practice. We have believed for a long time that behaviour is an area that we need to teach, much like any other curriculum area. The following statement is a good summary of the philosophy (in plain speak)

## Too often in schools...

If a child can't read, we teach.

If a child can't write, we teach.

If a child can't add, we teach.

If a child can't behave, we punish.

We need to ensure that students are given explicit teaching around the expected behaviours of our school. For 8 years we had a detention system. It did not work, punitive based systems do not work to improve the over all values that students have and exhibit. A restorative and positive approach does teach and build the understanding of the importance of being a supportive and constructive member of a community. That said ,we still need to ,from time to time, deal with things at a high level with serious consequences.

The table to the right is our Matrix that outlines and breaks down what our three values stand for. These are explicitly taught and revised as needed over the year. These values and expectations apply not only to the students but to anyone that comes into Ross Intermediate.

**Whakamahia**  
**kia tika**  
Act with Integrity

**Ako** kia  
**Kaha**  
Learn with Purpose

**Whaia**  
ou **Moemoea**  
Inquire and Dream

Linked to our PB4L System are a range of Rewards that students can earn while at Ross Intermediate. These are outlined on the following page...

Students earn points in the following ways...

## What is PB4L School Wide?

PB4L School-Wide looks at behaviour and learning from a whole-of-school as well as an individual child perspective. The framework is based on international evidence.

The Positive Behaviour for Learning School-Wide framework, otherwise known as PB4L School-Wide, is helping New Zealand schools build a culture where positive behaviour and learning is a way of life. The framework can be tailored to your school's own environment and cultural needs.

It's not about changing the students; it's about changing the environment, systems and practices you have in place to support them to make positive behaviour choices.

PB4L School-Wide is based on the Positive Behavioural Interventions and Supports (PBIS) framework developed at the University of Oregon in the 1990s. PBIS is now in thousands of schools across the US and there are over 500 School-Wide schools in New Zealand.

SOURCE: pb4l.tki.org

ACT WITH INTEGRITY	
<b>We interact with respect.</b>	<ul style="list-style-type: none"> <li>• Our language is positive and supportive.</li> <li>• We listen to the views of others.</li> <li>• We respect boundaries.</li> </ul>
<b>We care for property, ourselves and others..</b>	<ul style="list-style-type: none"> <li>• We look after learning tools.</li> <li>• We ask for help when we need it.</li> <li>• We offer to help others when they need it.</li> </ul>
<b>We interact online responsibly.</b>	<ul style="list-style-type: none"> <li>• We use technology for appropriate learning.</li> <li>• We safeguard our online identity.</li> <li>• We communicate concerns to an adult.</li> </ul>

LEARN WITH PURPOSE	
<b>We are positively engaged.</b>	<ul style="list-style-type: none"> <li>• We remain focussed on learning.</li> <li>• We are always curious - we want to know more.</li> <li>• We cooperate with and encourage each other to learn.</li> </ul>
<b>We take ownership.</b>	<ul style="list-style-type: none"> <li>• We know what we are learning, and why.</li> <li>• We complete learning tasks on time.</li> <li>• We accept guidance and constructive criticism.</li> </ul>
<b>We do our best.</b>	<ul style="list-style-type: none"> <li>• We work hard, even when no one is looking.</li> <li>• We constantly try to improve.</li> <li>• We work together to reach our potential.</li> </ul>

INQUIRE and DREAM	
<b>We set goals.</b>	<ul style="list-style-type: none"> <li>• We look for new learning challenges.</li> <li>• We know where our learning is leading us.</li> <li>• We don't set limits on ourselves, or others.</li> </ul>
<b>We make things happen.</b>	<ul style="list-style-type: none"> <li>• We learn and grow from every experience.</li> <li>• We get actively involved in the world around us.</li> <li>• We get involved in our community.</li> </ul>
<b>We celebrate achievements.</b>	<ul style="list-style-type: none"> <li>• We look for the good things other people are doing.</li> <li>• We tell people when they have done a good job.</li> <li>• We accept praise with respect and humility.</li> </ul>

This is the regular and often aspect of our PB4L System. It is also linked to school wide or House Based rewards based on aspects we are focusing on. Students place their **Jenkoin™** into the reward they wish to vote on and after the selected period of time the leading reward is activated.



## STUDENT AWARDS

These are awards that are given out to any student to recognise achievement or effort in class or around the school. If your child comes home with one of these awards, do praise them, they are exhibiting one of our PB4L expectations. These rewards go into a weekly draw for students to win a range of cool prizes from Juicies and Pizza to TV's and the latest cool games.

## SCHOOL POSTCARDS

Each week the classroom teacher will send a postcard home to a family from their class, letting them know about something great that has been achieved.

## TEAM STUDENT OF THE WEEK

Each week teams nominate a student of the week and they are displayed in the office with the reason for their award.

## SPORTS PLAYER OF THE WEEK

Each week we will draw out a Player of the Week from one of our many sports teams and they will earn a \$20.00 Rebel Sport Voucher. All players of the week also receive a Juicie.

## LATENESS

We believe firmly in students being punctual to school and prepared for learning at the beginning of the day. We encourage parents to ensure their child gets to school on time to maximise their learning opportunities.



## PB4L TIME

This is an exciting addition to our PB4L toolbox. From 8:40 - 9:00 schoolwide will be known as PB4L Time. This is where we will introduce what we are focusing on and it will all be positively driven. Student Awards from the previous day will be issued and on Mondays a Schoolwide Broadcast from 8:50am - 9:00am will be in all classrooms to start the week with a positive bang. This will be an evolving concept. All classes are expected to engage with PB4L Time and Coaches will be in classrooms as well for this 20 minutes.

## FINAL NOTE:

Our behaviour system is designed to be fair and consistent for all students and provide us with a framework to ensure we have students meeting what we know are fair and achievable expectations. We aim to communicate openly with parents and keep you fully informed. This will only work with a strong home and school partnership.

I urge you to contact us at any stage if you have a concern. If your child comes home and expresses a concern to you please come in and see us, at times your child will omit important information that can paint quite a different picture.

Please appreciate that everything we do, we do in the best interests of all the students at Ross Intermediate. That said, we are human, and we won't always get it right. Honest, open, constructive dialogue between home and school will ensure we can always come to a positive outcome.

Ross Intermediate expects that all students will follow our **fair** and **reasonable** expectations. We expect students to take a pride in their appearance and the way they represent themselves and the school. We take a strong stance against students not meeting expectations and we don't apologise for it.

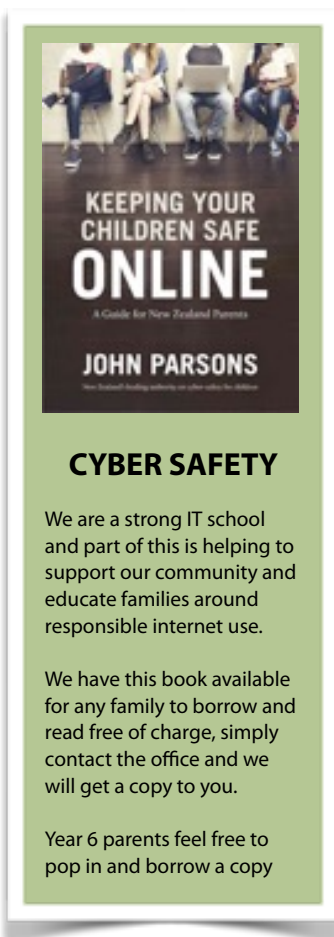


He aha te mea nui o te ao.

**He tāngata, he tāngata, he tāngata.**

What is the most important thing in the world?

**It is people, it is people, it is people.**





## REFRESH

*It's what we do on Fridays*



Refresh, for us, is our version of what other schools call Assembly. It is designed as a fun and exciting way to end our school week. It is hosted by the principal with a range of inputs from other staff and students, run in the style of a variety styled TV show. The technical side of refresh is run by students. Parents are always welcome, however, we are restricted by space, but we will always find room for you, especially if your child is doing something during the week.

Refresh also shares a range of students talents through the R Factor. Competitions and physical challenges are also a part of this jam packed 30 minutes. We even have our own version of Survivor called Refresh Island. This year we also introduced a new competition Dancing with the staff, a whole heap of fun.



## IMAGINE GARAGE

This is an opportunity for kids to independently explore and discover through a range of mediums. Interest zones are developed allowing students to explore a range of areas such as Rubix Cube, Knitting, Lego and Robotics. There is also a space where students can explore the intricacies of technology by taking apart and rebuilding a range of technology and appliances (non nuclear).

facebook

You can keep in touch with us and see all the fun cool things happening at Ross Intermediate through our Facebook Page. Like us today and start getting updates immediately from the team at Ross



Our school Library is also housed in this space. As part of our library we also utilise the Overdrive system giving students access to a wide range of content electronically. Our Library is designed to replicate a living room space as we still feel it is vital that kids are able to snuggle up with a good book.

This area is also a place where students are able to work with each other at Morning Tea and Lunch breaks if they just need a little more support. It is based around the premise of the need for a whole village to raise a child and caters for a range of students needs both socially and academically. If students are in special programmes over the year chances are they will be in the village.





# GYMNASIUM and BIKE TRACK

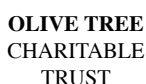
We are very proud of these Board Funded facilities made possible thanks to many people as acknowledged below. All classes use these facilities as much as possible and the Bikes in Schools programme is seeing some kids riding a bike with success for the first time because of this programme.



## Ross Intermediate Gymnasium

On Wednesday 14 August 2013, the Ross Intermediate Board of Trustees sought approval from the Ministry of Education to use board funds to construct a Gymnasium for students at Ross Intermediate.

The Board of Trustees acknowledge the following organisations and trusts who have provided financial assistance towards the completion of this facility:



We also acknowledge the hundreds of students that helped raise funds for this facility, despite no longer being at the school to benefit from it.

## Ross Intermediate Bike Track

Our fantastic bike, skills and pump track have been made possible through the generous support of the Palmerston North City Council along with educational support from Sport Manawatu.



We also acknowledge the support of the following in helping to complete this project and seal our track.





# SCHOOL ENROLMENT SCHEME

The full copy of our Enrolment Scheme is available on our website.

## HOME ZONE

All students who live within the home zone described below: All streets and portions thereof bounded by:

- Rangitikei Line (SH3) from its intersection with Flyers Line to Tremain Avenue
- Tremain Avenue to North Street
- North Street to Featherston Street
- Back along Featherston Street to Carroll Street
- Carroll Street to Grey Street
- Grey Street to its intersection with Albert Street
- Albert Street to Church Street
- Church Street to its intersection with Ruahine Street
- Ruahine Street to Fitzroy Street Bend, including numbers 497 and 508
- From Fitzroy Bend Reserve, along the Manawatu River to a point opposite the end of Koehlers Road
- Koehlers Road and then a line from its intersection with Te Matai Road to the intersection of Napier Road (SH3) and James Line
- James Line to its intersection with Kelvin Grove Road
- Kelvin Grove Road to the Roberts Line North intersection
- Roberts Line North to its intersection with Richardsons Line
- Richardsons Line to Milson Line, including Setters Line North (Setters Line West on some maps)







# ACADEMIC OPPORTUNITIES

Students are taught primarily by their Classroom Teacher. Over the week we cover all aspects of the New Zealand Curriculum with a concentration on Literacy and Numeracy. We aim to have class sizes at no more than 26 students per class.

We cater for students' needs through careful classroom placement each year to try and match them with an ideal teacher for their needs and interests. In the majority of cases, students will remain with the same teacher for two years.

We utilise support for students who require it through both the Ministry of Education and the RTLB Service. Parents are required to book a conference with their classroom teacher in the first two days of the school year, details regarding this will come out with your child's classroom placement prior to Christmas.

We participate in a range of Academic Competitions and Challenges over the year including:

- Manawatu Mathex Competition
- Otago Problem Solving Challenge
- Technology Challenges
- Manawatu Science Fair
- Regional and School Speech Competitions
- A range of writing competitions and awards
- NSW/ICAS Examinations
- Literacy Quiz



## EXTENSION OPPORTUNITIES (Children with Special Abilities)

We have two classes for students who are operating above their curriculum level. Students will be required to attend a morning at Ross Intermediate if they wish to be included in this programme. This, along with information gained from their current teacher will determine placement in these classes. There will be further details of this programme in your Welcome Letter upon enrolment.

## ROSS INTERMEDIATE and NATIONAL STANDARDS

We will provide you with an online report of your child's rating against the National Standards twice throughout the year. At the start of the year conference, we will discuss where we currently believe they are so that you are fully informed and aware. Where we note a major change over the year, we will be in touch with you so you will also be informed of where your child is. We also have real-time learning available for you to see via our Student Database Linc-Ed.

## SCHOOL CONFERENCES

You will formally meet with your child's teacher four times over the year. Once at the start of the year and then another conference in Term Two and Three as well as a final conference in Term 4. Full details will be sent out. We encourage you to call in at any time to discuss your child's progress. We prefer to deal with things in a timely manner, rather than wait for a conference time.

## TE REO and TIKANGA MAORI OPPORTUNITIES

We aim to send all students to a local Marae during their time at Ross Intermediate. Classes often open their day with Karakia and embrace Te Ao Maori in our learning and classrooms.







# TE WHARE WAIORA

## Hei whakamārama:

Literal translation - The house of soundness/well-being

## Wai - Water

Ko wai tātou. We are the water, ever changing and free flowing. Wai alters its path to overcome any obstacle, a resilient force that never stops moving forward. Wai is the sustenance of life, flowing without restriction from Ranginui to Papatūānuku.

Ora - life, to be revived, a state of well-being

Our whare gives our tamariki the foundation to explore who they are, as Māori. To feel empowered by the taonga that have been handed down from our tīpuna. Our tamariki are able to embark on a journey that empowers not only themselves, but their wider whānau reviving their language and customs both inside & outside of the classroom.

Te Whare Waiora will provide our tamariki, ngā rangatira mō āpōpō (the leaders of tomorrow), with an opportunity to revitalize and sustain Te Ao Māori, Te Reo and tikanga in their daily living to enhance the hauora (well being) of each individual and their whānau.

“He tina ki runga, he tāmore ki raro”

In order to flourish above, one must be firmly rooted below. Our tamariki need to know where they come from and who they are as Māori in order to stand tall and thrive.

The foundation of our whare is built on manaakitanga:

“He aroha whakatō, he aroha puta mai”





# CULTURAL OPPORTUNITIES

## SCHOOL CHOIR

We have a large School Choir who work with experienced Choral Teachers we have on staff. We try to find a range of opportunities for them to perform.

## SCHOOL HARMONY CHOIR - Voicestra

An extension group is offered for students displaying a high aptitude in music appreciation. There will also be a range of performance opportunities for students in this group.

## DRAMA ACADEMY / PERFORMING ARTS

Students with an interest in Drama will be able to join the Drama Academy / Performing Arts. They compete in the Super Arts Drama every two years.

## DANCE ACADEMY

Students that display excellence in dance will be given the opportunity to enhance this through the Dance Academy. Over the year, students will be offered the chance to perform a range of dances as well as attending different shows that are on offer in Palmerston North.

## KAPA HAKA

Staff from Ross Intermediate support a strong Kapa Haka programme for students. As well as Kapa Haka we also now offer Bilingual Education and a range of Immersion Opportunities.

## PASIFIKA

Staff and students from Ross Intermediate take pride in celebrating other Pacific cultures through this weekly opportunity.

## SCHOOL BAND

The school band is another opportunity for student to display their inner 'rock-star'. There are a range of opportunities to perform over the year.

## ELECTIVES PROGRAMME

In Terms 2 and 3, students will get to take part in the Elective Programme. Over the course of the year the students are able to choose from a wide range of Languages, Arts, Culture and Sporting opportunities. Previous electives have included: Drama, Dance, Curry in a Hurry, Animal Antics, Photoshop, Go Karting, Enterprise, Trade Me and many many more. Electives takes place each Friday.

## SCHOOL PRODUCTION

In 2021 all students will be on the stage in our School Production. This happens every two years and is performed at the Regent Theatre.

## VISUAL ARTS EXTENSION

Students are offered the opportunity to try out for a group of artists that meet on a weekly basis to complete a range of projects for the school.







# SPORTING OPPORTUNITIES

There are opportunities for students to compete in a range of sports over the year. In some cases students are required to play for clubs, but where there are school competitions, we field teams.

## ROSS INTERMEDIATE SPORTS ACADEMY

The Ross Intermediate Sports Academy aims to offer an insight to keen and talented sports people and give them the opportunity to grow as an athlete. The Academy introduces new sports and opportunities as well as teaching knowledge about fitness and ways to increase personal levels. It is an honour to be in the Academy and members are expected to perform positively in class, as well as during Academy times.

This programme is covered under our Free Education Policy and new students into the Academy receive a T Shirt. Year 8 students use the same from the previous year..

SPORT	TIME OF YEAR	ESTIMATED COST
Basketball	Term 2 and 3	
Canoe Polo	Term 2 and 3	
Chess	Lunchtimes	
Cricket	Term 1 and 4	
Hockey (Summer)	Term 1 and 4	
Hockey (Winter)	Term 2 and 3	
Netball	Term 2 and 3	
Volleyball	Term 1 and 4	

## SUPER SPORT COMPETITIONS

Ross Intermediate takes part in all Super Sport competitions. This involves competing against other local Intermediates from Levin to Wanganui as well as Feilding and Masterton.

Sports offered through this include:

- Basketball
- Cricket
- Netball
- Hockey
- Tennis
- Soccer
- Rugby
- Touch Rugby
- Softball
- Athletics, Triathlon
- Mountain Biking
- Volleyball, Badminton and Cross Country







# SCHOOL UNIFORM REQUIREMENTS

All of our School Uniform is supplied by School Tex and sold through the Warehouse Palmerston North. Any issues with uniforms will be managed through the Warehouse returns procedures. Contact the service desk for support. Let us know if you have any concerns.

The overall cost to parents of uniform has actually reduced. We have been able to make significant savings on our Polo Shirt by removing the current white stripe on the collar. Both styles will be accepted.

## WANT TO SAVE MORE?

The Warehouse Christmas Club is a great way to put money aside for your uniform over the year. You will also get an additional 5 percent off the cost of uniform when you purchase in December and January. Note that discounts offered on clothing at the Warehouse do not apply to school uniforms.

## PAYMENT OPTIONS:

The Warehouse accept Cash, Major Credit Cards, Q Card and you are also able to Layby uniform.

## WHY DID YOU MAKE THIS CHANGE?

We made this change because we believe that we can offer a better solution to our community through the retail option. There are more diverse payment options, cost savings as well as more convenient shopping hours. You are also able to get all your back to school matters sorted in one friendly location, should you choose.

## EARRINGS

Girls and boys are able to wear earrings. However, these are the only piercings that students may have. Only one piercing is allowed in each ear. This should be in the lobe of the ear. Please do not allow your child to breach this as they will need to remove the earring.

## NAILS

Nail polish is not to be worn at any time. If you allow your child to wear it in the weekend it needs to be removed before they come to school. If your child decides to get decorative nails then they will need to be removed.

## TAONGA

Students are able to wear items that are of cultural, religious or spiritual significance. However, we do ask that these be worn inside their clothing.

	<b>Retail Price</b> <i>(subject to change)</i>
School Polo Shirt	25
School Polar Fleece	42.99
School Shorts	26.99
School Pants	34
School Skirt	28
PE Shirt	40
PE Shorts	24.99
School Bucket Hat	11.99
School Cap	7.99

## HAIR-TIES and BANDS

Please ensure all hair ties are plain black or white.

## HAIR STYLES

Students should have a clean and tidy hair style. We ask that students do not make extreme changes to their natural hair colour and style.

## WINTER UNIFORM

In addition to our listed uniform items, students are able to wear black tights, black jackets or black polyprop/thermals as an additional layer to remain warm.

## SHOES

Shoes need to be plain black shoes. Simple rule is when you stand in them can anyone else see anything other than black? If they can't then you are fine. Socks should be black only.

## OTHER JEWELLERY

Only Ross Intermediate Incentive and Rewards bands may be worn. A wristwatch is also able to be worn.

## MAKEUP

Students are not permitted to wear makeup while at school.

## SECOND HAND UNIFORM

Each year we hold a second hand uniform sale. Details of this are published in your enrolment material. A limited stock is held over the year at the school office as well.



# OTHER THINGS YOU MAY WANT TO KNOW.

## BIKING TO SCHOOL

All students biking to Ross Intermediate are expected to follow the appropriate road rules. We do not permit students to ride on the footpath or through the school grounds. All students biking are encouraged to have a fluoro vest. While we do provide a locked bike shed during the school day, each bike should still have its own bike lock. Scooters are permitted but need to follow the same rules as bikes and should also be locked during the day. We are not able to accept any responsibility for scooters or bikes stolen from school. Our best advice - LOCK THEM!

## CARE OF THE SCHOOL

Ross Intermediate deems students that are in the community and in their uniform, to be under the care of the school. Therefore, should they act in a way that we would not approve of, disciplinary action can and will be taken.

## CELL PHONES

We do not permit students to have mobile phones on them at school. Students are, however, able to hand in their phone to their teacher to be stored securely.

## COMPLAINTS and CONCERNS

Refer to the specific section on this in this guide.

## DENTAL SERVICE

Ross Intermediate hosts the dental service through Mid Central Health. They are now located in their new clinic on the Freyberg fence line. They can be contacted directly on 358 4572.

## ESOL STUDENTS and SUPPORT

Ross Intermediate has many students where English is not their first language. We provide Teacher Aide and Teacher Support for these students.

## HEALTH and SAFETY

We are all responsible for ensuring our school is a safe workplace and learning environment, if you see something that you feel is unsafe then please ensure you report your concerns to your child's teacher or the office or email us.

## HOMEWORK

We have a policy where we ask parents to make a call on homework. We will provide more details on this at the start of each year. Essentially if you want your child to have homework, then they will. If you don't, then they won't.

## IMMUNISATION / HEALTH RECORDS

We require evidence that your basics sets of immunisations have been completed. In the event of an outbreak any students or families that have not provided this may be restricted from attending school.

## LEADERSHIP

At Ross Intermediate School we actively promote the concept of students taking responsibility for their own acceptable behaviour and work habits.

Our School House system creates a



climate, which encourages positive competition and leadership. There is further opportunity for a large number of children to take on a range of responsibilities, which encourages commitment and service to our school and to their fellow students. House Leaders assist with the leadership programmes in the school.

### **MEETING THE NEEDS OF ADOLESCENTS**

During your child's two years at Ross Intermediate School, they will have the opportunity to participate in our Pubertal Change and Drug Education Programmes. Full consultation with parents precedes these programmes and parents have the right to withdraw their child from the Sexuality Education programme if they so wish.

### **NEWSLETTERS**

We issue a termly calendar each term with the main events of the term. Additional school events can be found via our Facebook or Website. Notices for school wide events will also be emailed / sent home with students.

### **PARENTAL INVOLVEMENT**

Ross Intermediate School encourages the building of close links between home and school. Parents are invited to school for assemblies, sports days, camps, student interviews and class outings. Regardless of what your kids may say – you are always welcome.

All parents may contact the school to organise a time to meet with any staff member. Parents are required to come to the main office to sign in when they are making an unplanned visit to the school, so that there is less disruption to classroom programmes and also to ensure we meet Health and Safety requirements for workplaces.

Parents assisting classes over the year may be required to undergo a Police Vet Check.

### **PARENTAL REQUEST FOR WITHDRAWAL OF CHILDREN FROM CLASS ON A REGULAR BASIS**

All requests for release from school to attend out of school instruction will be directed to the Principal. The Principal will advise parents of possible consequences for a child's progress of such exemption from class. In reaching a decision concerning a child's release from a normal classroom programme to attend out of school instruction, the learning needs of the child shall be the paramount consideration.

### **PARTNERSHIP**

- We believe that close home and school contact is essential in the development of your child's education.
- Parents should know that they rightly have a partnership with the teaching staff with regard to their child's education in this school.
- We acknowledge that parental support is a key factor in our reporting process, behaviour management, homework and out of school programmes.
- Any concerns need to be brought to our notice as soon as possible.
- We welcome you to the community of Ross Intermediate School and trust that your association with us will be a successful one.

### **REPORTING TO PARENTS**

We provide conferences each term for parents and Whanau to keep updated with how your child is doing. We also provide two written online reports over the year.

Do not wait for these reporting periods. If you have a concern, come in and see us straight away.





## PERSONAL PROPERTY

Students are encouraged to be responsible and take care of personal items. All items must be named. Expensive items e.g. MP3 players, PSPs, should be left at home, as the school cannot be responsible for any damage or loss of such items. The School reserves the right to remove property from students that is causing a disruption to learning. Parents will be required to collect these items from the Office within two weeks.

## SCHOOL ATTENDANCE and LATENESS

We offer a phone service for student absences. Messages can be left on this service 24 hours. We require all parents to make contact with us if their child is going to be absent from school. Students with irregular attendance do not achieve as well as students with regular attendance. We do not hesitate to utilise the Truancy Service or Police Youth Aid to follow up on suspected truancy.

- To leave a message, call the school on 06 3585461 and choose the absence option.
- You can also text the details to **021 157 2739**. If you text, we may call you to verify the absence.
- School starts at 8:40am. We ask that students be at school by 8:30am so they will be ready to start learning at 8:40. Bus Services sometimes means this is not possible.
- If a child is late to school they need to sign in at the office and receive a late pass. Continual lateness (bus students exempt) may result in us contacting you to come up with a plan to combat the lateness.



## SCHOOL HOURS

The office operates from 8:00am – 4:00pm. Classes begin at 8:40am and conclude at 2:45pm. Our lunch break is always 12:30 – 1:15 with morning break from 10:40 – 11:00. We ask that students don't arrive at school prior to 8:00am as we cannot guarantee staff will be available before this time to supervise them.

## SCHOOL LUNCH SERVICE

We operate a lunch service every Wednesday and Friday. We do not allow parents to bring junk food (KFC, McDonalds, Pizza, Pies or Fizzy) to students at school. We prefer to encourage healthy food choices. There are times when these foods are available through the school as 'sometimes' foods. Lunch orders through Pita Pit and Subway are available via online ordering options only. Details will be sent to you early in the year.

We are also part of the Kickstart Breakfast Programme offering support to students needing breakfast at the start of the day.

## SCHOOL POLICIES

A complete list of all school policies can be found on the school website, or call in and we will print them for you.



## **SCHOOL STATIONERY**

We provide all stationery requirements for students. It is paid for by the school as part of our Free Education Policy (subject to renewal)

## **SCHOOL WEBSITE**

Ross Intermediate has a comprehensive website. From this site parents are able to provide feedback to the school. This can be accessed from: [www.rossint.school.nz](http://www.rossint.school.nz). We also have a page on Facebook for the latest news and events.

## **SICKNESS and ACCIDENTS**

Should your child become unwell while at school the office will contact you to collect them. Your child should not be emailing you or contacting you directly if they are feeling unwell. If they do please contact the office first so we can look into it.

Should your child need to be taken to hospital, we will make every attempt to contact you or your emergency contact. A staff member will always accompany the child to hospital until you are able to come and meet them there.

Should you have a concern over safety in the school environment or see something you view as a hazard please report it to the office.

## **VANDALISM**

Any student that causes deliberate damage to school property will be responsible for the full cost of repair. Any damage caused through neglect or stupidity will also be passed on to students and their families to cover the cost of repairs. Accidental damage is covered by the school.

## **ZEBRAS**

Due to changes in Health and Safety Legislation we no longer allow Zebras to come to school. Lions and Tigers are discouraged.







# SCHOOL CONTACT DETAILS

There are lots of ways that you can get in touch with us.

**PHONE** 06 358 5461  
**FAX** 06 358 5464  
**ABSENCES** 021 157 2739

## PHYSICAL ADDRESS

25 Freyberg Street  
Palmerston North

## Management 24/7 After Hours Service (Fees may apply)

Wayne Jenkins (PRINCIPAL)

[wjenkins@rossintermediate.school.nz](mailto:wjenkins@rossintermediate.school.nz)

Zayne Templeton (Deputy Principal)

[ztempleton@rossintermediate.school.nz](mailto:ztempleton@rossintermediate.school.nz)

Geovanna Paine (Deputy Principal)

[gpaine@rossintermediate.school.nz](mailto:gpaine@rossintermediate.school.nz)

Sharyn Loveridge

[sloveridge@rossintermediate.school.nz](mailto:sloveridge@rossintermediate.school.nz)

Andrew Jamieson

[ajamieson@rossintermediate.school.nz](mailto:ajamieson@rossintermediate.school.nz)

## Administration 8:00 - 4:00

Sally Pascoe

Jess Kennard

[office@rossint.school.nz](mailto:office@rossint.school.nz)

## EMAIL FORMAT

First letter of first name and  
then surname (no dots)

[@rossint.school.nz](mailto:@rossint.school.nz).



## NOTE:

All communications with staff should be via email or through the school office. We ask that parents do not contact staff at home or outside school hours unless they have requested you do so.

After hours concerns should be directed to  
Wayne's cellphone **021 242 6500**



You can also email staff via our website by going to the staff page and clicking on their photo.

**DENTAL** 06 358 4572

## OTHER CONTACTS:

ORGANISATION	PHONE	WEBSITE (if applicable)
Youth One Stop Shop (Student Support)	06 3555906	<a href="http://www.yoss.org.nz">www.yoss.org.nz</a>
Youthline	0800 376 633	<a href="http://www.youthline.co.nz">www.youthline.co.nz</a>
Ministry of Education – Wanganui	06 349 6300	<a href="http://www.education.govt.nz">www.education.govt.nz</a>
Police Youth Aid	06 351 3600	<a href="http://www.police.govt.nz">www.police.govt.nz</a>
Sport Manawatu	06 357 5349	<a href="http://www.sportmanawatu.org.nz">www.sportmanawatu.org.nz</a>
Child Youth and Family	0508 326 459	<a href="http://www.cyf.govt.nz">www.cyf.govt.nz</a>
Madge (Uzabus)	06 3570903	<a href="http://www.uzabus.co.nz">www.uzabus.co.nz</a>



# SAFETY AT ROSS...

All visitors must check in at the main office and sign in if they are going to be on site **unsupervised**.

**Visitor Passes** must be displayed at all times while on site. Staff with visitors need to ensure they advise them of any current on site hazards. Visitors onsite for a period of more than one day need to sign a Health and Safety Form.



## EARTHQUAKE

Move no more than a few paces to a safe place and drop, cover and hold.

Do not attempt to run outside.

Face away from windows.

Attend to your own desk before assisting others.



**When an adult advises that it is safe students will proceed to the assembly area.**



## FIRE

When the alarm activates (which is a siren and evacuation voice), proceed to the main assembly point, the cricket wicket on the field.

Take the safest path to this point.

When there, teachers will check off their class and a runner will tell the Fire Warden they are accounted for.

Only when the principal or Fire Warden gives the all clear, should classes return.

The Fire Warden will complete the checklist and evacuation sheet.

Teachers are to ensure rooms are cleared and locked on exit.

The Admin Team will manage the following areas:

**Admin Block  
Toilet Blocks  
Hall**



## LOCKDOWN

The signal for a lockdown is the bell ringing continuously for a period of more than 10 seconds.

When this occurs move calmly to the nearest classroom as quickly as possible. If you are already in a room, you remain in that room.

Classrooms should be locked and blinds closed. Students should be seated below window height in the most secure and practical position.

Adults need to maintain a level of calm in the classroom.

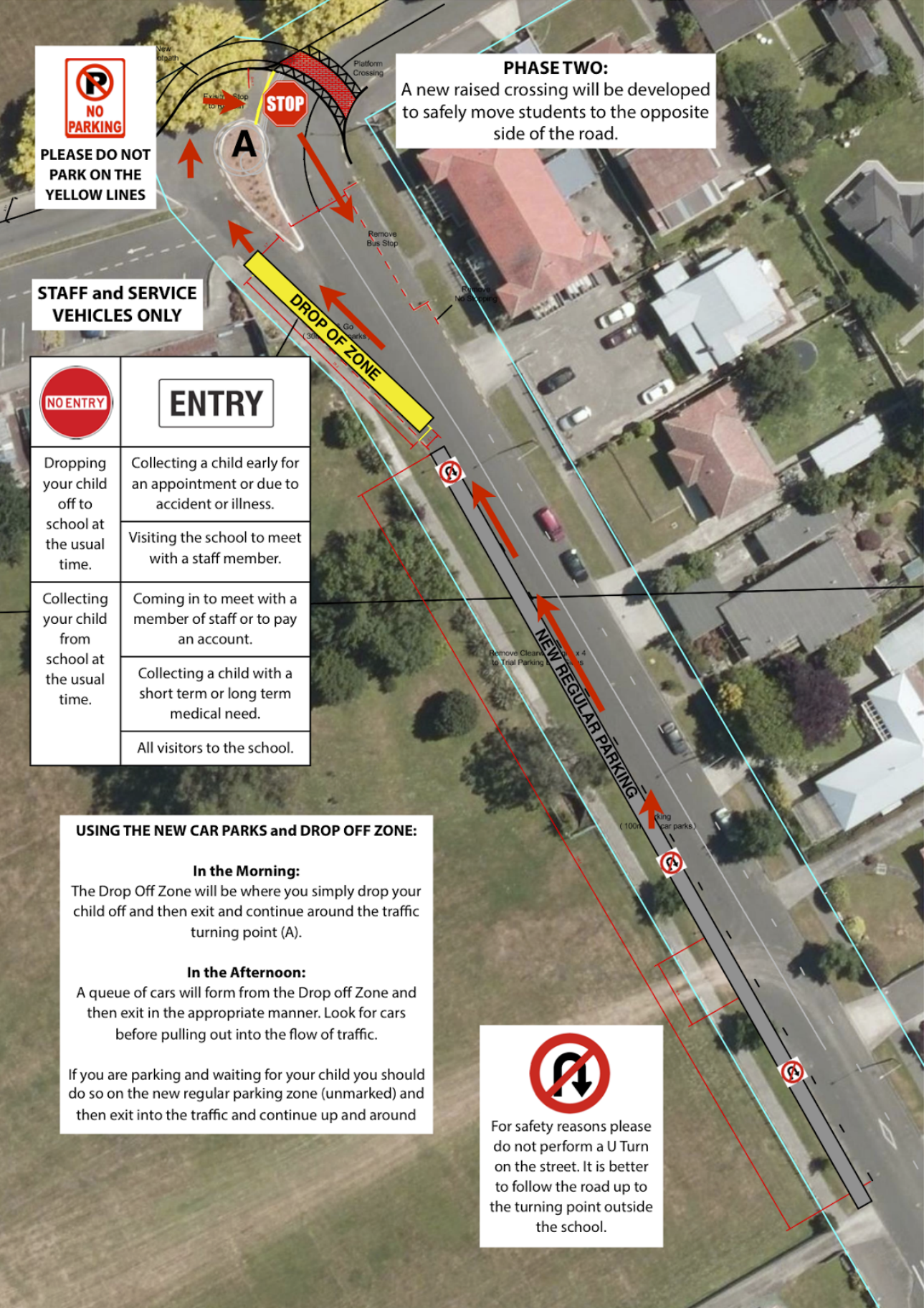
The lockdown end signal will be either an intercom message or 5 short bells. Students then return to their classrooms and a roll is taken to account for all students. Any students not accounted for need to be called through to the office. Also confirm when classes are fully accounted for.





# TRAFFIC SAFETY PLAN

As we move into Winter we remind you of the traffic safety plan that was outlined at the Day 1 Conferences. Please follow these instructions in the interests of safety for all concerned. If you park on a yellow line you will be liable for a ticket and the council do from time to time patrol this. Please model the appropriate behaviour to your children. Please do not arrange to collect your child from within the school gates unless it is absolutely required (Medical or similar). I praise the parents that park on Featherston Street and have their children walk safely on the footpath to that point. Reduces congestion, Ka Pai. Many schools have taken to blocking off and locking access to car parks. We would like to hope that we do not need to go to those measures but safety is paramount.





# SO, NOW YOU HAVE A COMPUTER AND INTERNET...

What do you do now?

# 1

### **Have the computer charger set up in a shared space.**

Setting up the charger in a shared or public space, such as, the kitchen, a dining room or lounge will mean that the computer will not be used when a young person should be sleeping. It also ensures that the computer comes to school fully charged each day.

# 2

### **Have young people use the internet in shared spaces.**

Avoid young people being on the internet in their room. They should not be using it to view anything they wouldn't want someone else to see on their screen. Have regular conversations about what they use the internet for, how the games work, and how they complete their homework.

# 3

### **Actively support your young person in using social media.**

Young people are not allowed to use most social media until they are 13, including Facebook, Instagram and Snapchat. This is not a reality for some families and we encourage you to be active in how your young person is using it, including having them as a friend or contact online. As a school we will act on any concerns raised if it has an impact on another student or the school itself. While they may be out of school hours we will protect the rights of all students to be free from harm and bullying.